






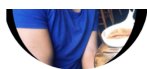
|   |   |  |           |            |                    |
|---|---|--|-----------|------------|--------------------|
|                    |   | CAT 2025 M1 New Batch Starts 5th May Monday 9 am<br>(60 Days Challenge 5 Days a Week 1 Hr Daily Class )  |           |            |                    |
| For Details Contact 8999118999 or visit <a href="https://courses.catking.in">courses.catking.in</a> |   |  |           |            |                    |
| Live Classes Summary  |   | Week 1: 5th to 10th May VPAR: Mon to Fri:- 9 to 10 am   Wed and Fri 8 to 9 pm Verbal<br>Week 2: 12th May onwards: Mon to Fri :- 8 to 9 am   Wed and Fri 8 to 9 pm Verbal |           |            |                    |
| Module  | Topic                                   | Date   | Day       | Time       | # Questions in CAT |
| Verbal Kickstarter  | Verbal Wednesday Parajumbles            | 30th Apr   | Wednesday | 8 to 9 pm  |                    |
|   | Verbal Friday Parasummary               | 2nd May  | Friday    | 8 to 9 pm  |                    |
| Starter Module<br>VPAR Mon to Fri 9 to 10 am<br>Verbal Wed and Fri 8 to 9 pm                        | Vedic Maths                             | 5th May  | Monday    | 9 to 10 am | Chawanprash        |
|   | Vedic Maths                             | 6th May  | Tuesday   | 9 to 10 am |                    |
|   | Verbal Wednesday Vocabulary             | 7th May  | Wednesday | 8 to 9 pm  |                    |
|   | Percentages                             | 7th May  | Wednesday | 9 to 10 am |                    |
|   | Averages                                | 8th May  | Thursday  | 9 to 10 am |                    |
|   | Verbal Friday Reading Comprehension     | 9th May  | Friday    | 8 to 9 pm  |                    |
|   | Ratio Proportion and Variation          | 9th May  | Friday    | 9 to 10 am |                    |
| Weekend Revision  | VPAR Revision                           | 10th May   | Saturday  | 8 to 10 am |                    |
| Advance LOD 2 Lectures - IIT / NIT / Repeaters/ Scholars Batch : Sat and Sun 8 to 9 PM              |   |  |           |            |                    |
| DILR Module<br>8 to 9 AM (Mon to Fri )<br>Verbal Ability<br>8 to 9 PM<br>(Mon /Wed )                | Logical Reasoning Linear Arrangements   | 12th May   | Monday    | 8 to 9 am  | 22 Questions       |
|   | Logical Reasoning Analytical Puzzles    | 13th May   | Tuesday   | 8 to 9 am  |                    |
|   | Verbal Wednesday Parajumbles            | 14th May   | Wednesday | 8 to 9 pm  |                    |
|   | Data Interpretation Pie Charts          | 14th May   | Wednesday | 8 to 9 am  |                    |
|   | Data Interpretation Mixed Charts        | 15th May   | Thursday  | 8 to 9 am  |                    |
|   | Verbal Friday Parasummary               | 16th May   | Friday    | 8 to 9 pm  |                    |
|   | Data Sufficiency                        | 16th May   | Friday    | 8 to 9 am  |                    |
| Weekend Revision  | DILR Revision                           | 17th May   | Saturday  | 8 to 10 am |                    |
| Advance LOD 2 Lectures - IIT / NIT / Repeaters/ Scholars Batch : Sat and Sun 8 to 9 PM              |   |  |           |            |                    |
| Geometry Module<br>8 to 9 AM Mon to Fri<br>Verbal Ability<br>8 to 9 PM<br>(Mon /Wed )               | Geometry Triangles                      | 19th May   | Monday    | 8 to 9 am  | 2-3 Questions      |
|   | Geometry Circles                        | 20th May   | Tuesday   | 8 to 9 am  |                    |
|   | Verbal Wednesday Vocabulary             | 21st May   | Wednesday | 8 to 9 pm  |                    |
|   | Geometry Quadrilaterals                 | 21st May   | Wednesday | 8 to 9 am  |                    |
|   | Geometry Polygons                       | 22nd May   | Thursday  | 8 to 9 am  |                    |
|   | Verbal Friday Reading Comprehension     | 23rd May   | Monday    | 8 to 9 pm  |                    |
|   | Mensuration                             | 23rd May   | Friday    | 8 to 9 am  |                    |
| Weekend Revision  | Algebra Revision                        | 24th May   | Saturday  | 8 to 10 am |                    |
| Advance LOD 2 Lectures - IIT / NIT / Repeaters/ Scholars Batch : Sat and Sun 8 to 9 PM              |   |  |           |            |                    |
| Modern Maths Module<br>8 to 9 AM Mon to Fri<br>Verbal Ability<br>8 to 9 PM<br>(Mon /Wed )           | Permutation and Combination             | 26th May   | Monday    | 8 to 9 am  | 1-3 Questions      |
|   | Permutation and Combination             | 27th May   | Tuesday   | 8 to 9 am  |                    |
|   | Verbal Wednesday Parajumbles            | 28th May   | Wednesday | 8 to 9 pm  |                    |
|   | Progressions                            | 28th May   | Wednesday | 8 to 9 am  |                    |
|   | Probability                             | 29th May   | Thursday  | 8 to 9 am  |                    |
|   | Verbal Friday Parasummary               | 30th May   | Friday    | 8 to 9 pm  |                    |
|   | Probability                             | 30th May   | Friday    | 8 to 9 am  |                    |
| Weekend Revision  | Algebra Revision                        | 31st May   | Saturday  | 8 to 10 am |                    |
| Advance LOD 2 Lectures - IIT / NIT / Repeaters/ Scholars Batch : Sat and Sun 8 to 9 PM              |   |  |           |            |                    |
| Special Topic Module<br>8 to 9 AM Mon to Fri<br>Verbal Ability<br>8 to 9 PM<br>(Mon /Wed )          | Coordinate Geometry 1                   | 2nd June   | Monday    | 8 to 9 am  | 1-2 Questions      |
|   | Escalators Problems                     | 3rd June   | Tuesday   | 8 to 9 am  |                    |
|   | Verbal Wednesday Vocabulary             | 4th June   | Wednesday | 8 to 9 pm  |                    |
|   | Set Theory and Venn Diagram 1           | 4th June   | Wednesday | 8 to 9 am  |                    |
|   | Set Theory and Venn Diagram 2           | 5th June   | Thursday  | 8 to 9 am  |                    |
|   | Verbal Friday Reading Comprehension     | 6th June   | Monday    | 8 to 9 pm  |                    |
|   | Trigonometry, Heights and Distance      | 6th June   | Friday    | 8 to 9 am  |                    |
| Weekend Revision  | Geometry Revision                       | 7th June   | Saturday  | 8 to 10 am |                    |
| Advance LOD 2 Lectures - IIT / NIT / Repeaters/ Scholars Batch : Sat and Sun 8 to 9 PM              |   |  |           |            |                    |
| DILR Module<br>8 to 9 AM (Mon to Fri )<br>Verbal Ability<br>8 to 9 PM<br>(Mon /Wed )                | Logical Reasoning Circular Arrangements | 9th June   | Monday    | 8 to 9 am  | 22 Questions       |
|   | Logical Reasoning Analytical Puzzles    | 10th June  | Tuesday   | 8 to 9 am  |                    |
|   | Verbal Wednesday Parajumbles            | 11th June  | Wednesday | 8 to 9 pm  |                    |
|   | Data Interpretation Bar Graphs          | 11th June  | Wednesday | 8 to 9 am  |                    |
|   | Data Interpretation Tables              | 12th June  | Thursday  | 8 to 9 am  |                    |
|   | Verbal Friday Parasummary               | 13th June  | Friday    | 8 to 9 pm  |                    |
|   | Matrices                                | 13th June  | Friday    | 8 to 9 am  |                    |
| Weekend Revision  | DILR Revision                           | 14th June  | Saturday  | 8 to 10 am |                    |
| Advance LOD 2 Lectures - IIT / NIT / Repeaters/ Scholars Batch : Sat and Sun 8 to 9 PM              |   |  |           |            |                    |
| Arithmetic Module   | Profit and Loss 1                       | 16th June  | Monday    | 8 to 9 am  |                    |
|   | Profit and Loss 2                       | 17th June  | Tuesday   | 8 to 9 am  |                    |

|   |   |                         |           |           |                   |            |
|---|---|-------------------------|-----------|-----------|-------------------|------------|
| 8 to 9 AM Mon to Fri<br>Verbal Ability<br>8 to 9 PM<br>(Mon /Wed )  | Verbal Wednesday Parajumbles            | 18th June               | Wednesday | 8 to 9 pm | 9 to 11 Questions |            |
|   | Time Speed Distance 1                   | 18th June               | Wednesday | 8 to 9 am |                   |            |
|   | Time Speed Distance 2                   | 19th June               | Thursday  | 8 to 9 am |                   |            |
|   | Verbal Friday Parasummary               | 20th June               | Friday    | 8 to 9 pm |                   |            |
|   | Time Speed Distance 3                   | 20th June               | Friday    | 8 to 9 am |                   |            |
| Weekend Revision  |   | Arithmetic Revision     |           | 21st June | Saturday          | 8 to 10 am |
| Advance LOD 2 Lectures - IIT / NIT / Repeaters/ Scholars Batch : Sat and Sun 8 to 9 PM  |   |                         |           |           |                   |            |
| Arithmetic Module<br>8 to 9 AM Mon to Fri<br>Verbal Ability<br>8 to 9 PM<br>(Mon /Wed )   | Simple and Compound Interest            | 23rd June               | Monday    | 8 to 9 am | 9 to 11 Questions |            |
|   | Mixtures and Allegations                | 24th June               | Tuesday   | 8 to 9 am |                   |            |
|   | Verbal Wednesday Vocabulary             | 25th June               | Wednesday | 8 to 9 pm |                   |            |
|   | Time and Work 1                         | 25th June               | Wednesday | 8 to 9 am |                   |            |
|   | Time and Work 2                         | 26th June               | Thursday  | 8 to 9 am |                   |            |
|   | Verbal Friday Reading Comprehension     | 27th June               | Friday    | 8 to 9 pm |                   |            |
| Weekend Revision  |   | Arithmetic Revision     |           | 28th June | Saturday          | 8 to 10 am |
| Advance LOD 2 Lectures - IIT / NIT / Repeaters/ Scholars Batch : Sat and Sun 8 to 9 PM  |   |                         |           |           |                   |            |
| Numbers Module<br>8 to 9 AM Mon to Fri<br>Verbal Ability<br>8 to 9 PM<br>(Mon /Wed )  | Numbers : Basics                        | 30th June               | Monday    | 8 to 9 am | 1-3 Questions     |            |
|   | Numbers : HCF and LCM                   | 1st July                | Tuesday   | 8 to 9 am |                   |            |
|   | Verbal Wednesday Parajumbles            | 2nd July                | Wednesday | 8 to 9 pm |                   |            |
|   | Numbers : Factorization                 | 2nd July                | Wednesday | 8 to 9 am |                   |            |
|   | Numbers : Remainder Theorem             | 3rd July                | Thursday  | 8 to 9 am |                   |            |
|   | Verbal Friday Parasummary               | 4th July                | Friday    | 8 to 9 pm |                   |            |
| Weekend Revision  |   | Special Topics Revision |           | 5th July  | Saturday          | 8 to 10 am |
| Advance LOD 2 Lectures - IIT / NIT / Repeaters/ Scholars Batch : Sat and Sun 8 to 9 PM  |   |                         |           |           |                   |            |
| LRDI Module<br>8 to 9 AM (Mon to Fri )<br>Verbal Ability<br>8 to 9 PM<br>(Mon /Wed )  | Logical Reasoning Scheduling Problems   | 7th July                | Monday    | 8 to 9 am | 22 Questions      |            |
|   | Logical Reasoning Games and Tournaments | 8th July                | Tuesday   | 8 to 9 am |                   |            |
|   | Verbal Wednesday Vocabulary             | 9th July                | Wednesday | 8 to 9 pm |                   |            |
|   | Logical Reasoning Games and Tournaments | 9th July                | Wednesday | 8 to 9 am |                   |            |
|   | DILR Routes and Maps                    | 10th July               | Thursday  | 8 to 9 am |                   |            |
|   | Verbal Friday Reading Comprehension     | 11th July               | Monday    | 8 to 9 pm |                   |            |
| Weekend Revision  |   | DILR Revision           |           | 12th July | Saturday          | 8 to 10 am |
| Advance LOD 2 Lectures - IIT / NIT / Repeaters/ Scholars Batch : Sat and Sun 8 to 9 PM  |   |                         |           |           |                   |            |
| Algebra Module<br>8 to 9 AM Mon to Fri<br>Verbal Ability<br>8 to 9 PM<br>(Mon /Wed )  | Indices - Identities and Expressions    | 14th July               | Monday    | 8 to 9 am | 5-6 Questions     |            |
|   | Linear and Special Equations            | 15th July               | Tuesday   | 8 to 9 am |                   |            |
|   | Verbal Wednesday Parajumbles            | 16th July               | Wednesday | 8 to 9 pm |                   |            |
|   | Quadratic Equations 1                   | 16th July               | Wednesday | 8 to 9 am |                   |            |
|   | Quadratic Equations 2                   | 17th July               | Thursday  | 8 to 9 am |                   |            |
|   | Verbal Friday Parasummary               | 18th July               | Friday    | 8 to 9 pm |                   |            |
| Weekend Revision  |   | Algebra Revision        |           | 19th July | Saturday          | 8 to 10 am |
| Advance LOD 2 Lectures - IIT / NIT / Repeaters/ Scholars Batch : Sat and Sun 8 to 9 PM  |   |                         |           |           |                   |            |
| Algebra Module<br>8 to 9 AM Mon to Fri<br>Verbal Ability<br>8 to 9 PM<br>(Mon /Wed )  | Graphs                                  | 21st July               | Monday    | 8 to 9 am | 5-6 Questions     |            |
|   | Maxima Minima                           | 22nd July               | Tuesday   | 8 to 9 am |                   |            |
|   | Verbal Wednesday Vocabulary             | 23rd July               | Wednesday | 8 to 9 pm |                   |            |
|   | Logarithms                              | 23rd July               | Wednesday | 8 to 9 am |                   |            |
|   | Functions 1                             | 24th July               | Thursday  | 8 to 9 am |                   |            |
|   | Verbal Friday Reading Comprehension     | 25th July               | Monday    | 8 to 9 pm |                   |            |
| Weekend Revision  |   | Algebra Revision        |           | 26th July | Saturday          | 8 to 10 am |
| Advance LOD 2 Lectures - IIT / NIT / Repeaters/ Scholars Batch : Sat and Sun 8 to 9 PM  |   |                         |           |           |                   |            |
| <div><div><p><b>Sumit Sir</b><br/>MBA SPIJMR<br/>Exec Mgmt Harvard<br/>Business School<br/>YEP : IIM Ahmedabad</p></div><div><p><b>Sahil Sir</b><br/>NIT   ISB Hyderabad<br/>Quants and DILR Faculty<br/>CAT QA 99.9%iler</p></div><div><p><b>Prantik Sir</b><br/>MBA IIM Lucknow<br/>Quants and DILR Faculty<br/>Bain &amp; Co</p></div><div><p><b>Megha</b><br/>MBA SCMHRD<br/>JP Morgan<br/>Goldman Sachs</p></div><div><p><b>Biswadi Sir</b><br/>MBA NMIMS<br/>NMAT 220   CMAT AIR 8<br/>(QA 100%iler)</p></div><div><p><b>Preet Sir</b><br/>MBA<br/>Reliance Jio</p></div></div> <div><div></div><div></div><div></div><div></div><div></div><div></div></div> |   |                         |           |           |                   |            |



**Anisha**

MBA NMIMS  
Exec Mgmt Harvard  
Business School  
Ex - Marico | Ex -Henkel



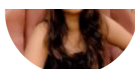
**Manoj Sir**

MBA IIM Mumbai  
Quants and DILR Faculty  
Amazon India



**Krishna Sir**

MBA NITIE  
Quants and DILR Faculty  
CAT 98.6%iler



**Simran**

MBA FMS  
Quants Faculty  
American Express



**Tushar**

MBA IIM Calcutta  
CAT 99.7%iler  
Goldman Sachs



**Monika**

CAT 99.91%ile  
Quants and DILR Faculty  
Doubt Solving Mentor

#### Important Notes

##### What Is the 60 Day's Challenge ?

60 Days, ie 12 Weeks - we will finish all topics once LOD 1 , after that we move to repeating 60 Days Challenge with increasing difficulty level of Questions to LOD 1.5; LOD 2

3 Things One Must Do Daily in the 60 Day's Challenge

**Step 1: Attend Live Class**

**Step 2: Same Topic Watch LOD 1 Concept Builder Videos**

**Step 3: Solve CATKing Bible LOD 1 eBooks**

##### How to Take Mocks ?

**Go to Learn ----> CAT 2025--> Real CAT (RC) Mock Proctored / Take Home - Non Proctored**

##### Unable to Understand the LOD 1 Class

Attend the Slow Learners Batch (SLB) Mon to Fri 6 to 7 pm

##### Have Doubts ?

Post them on the Discussion Forum ----> Go to Live Classes Schedule --Attend Mon to Fri 6 to 7 pm Doubt Solving Live Classes

##### How to Use the Course

Login to your dashboard - [learn.catking.in](https://learn.catking.in) | Check out the [Dashboard Overview Video](#)

Attend the [Induction](#) Mon to Fri 6 pm with Anisha Ma'am to understand the preparation plan

For any doubts post them on Discussion Forum on your Dashboard

##### Note For Intensive Students Only (July 2025 Onwards)

##### Every Sat 9 pm NMAT/SNAP Sat

Saturday and Sunday 9 to 10 pm Non CAT Strategy Masterclasses with NMAT, SNAP , CMAT, CET , XAT Toppers

##### Every Sun 9 pm CMAT/CET or XAT or

Refer the Actual Exam Question Videos, Solve the Non CAT Bible Books and Maximiser Books

##### MICAT Sundays

Refer to the GK Zone to gear up for the Current affairs - Monthly eBooks and Static GK for Exams like CMAT, MICAT, XAT

**For more details Contact 8999-11-8999 or Visit [courses.catking.in](https://courses.catking.in)**