



**CAT 2025 B3 New Batch Starts 21st Apr, Mon 7 pm  
(60 Days Challenge 5 Days a Week 1 Hr Daily Class )**

For Details Contact 8999118999 or visit [courses.catking.in](https://courses.catking.in)

Module	Topic	Date	Day	Time	# Questions in CAT	
<b>Live Classes Summary</b>						
Week 1: 21st to 25th April Mon to Fri 7 to 8 pm VPAR   Wed and Fri 8 to 9 pm Verbal						
Week 2: 28th April onwards: Mon to Fri :- 10 to 11 pm   Wed and Fri 8 to 9 pm Verbal						
<b>Advance LOD 2 Lectures - IIT / NIT / Repeaters/ Scholars Batch : Sat and Sun 8 to 9 PM</b>						
Starter Module VPAR Mon to Fri 7-8 pm Verbal Wed and Fri 8 to 9 pm	Vedic Maths	21st Apr	Monday	7 to 8 pm	Chawanprash	
	Vedic Maths	22nd Apr	Tuesday	7 to 8 pm		
	<b>Verbal Wednesday Vocabulary</b>	<b>23rd Apr</b>	<b>Wednesday</b>	<b>8 to 9 pm</b>		
	Percentages	23rd Apr	Wednesday	7 to 8 pm		
	Averages	24th Apr	Thursday	7 to 8 pm		
	<b>Verbal Friday Reading Comprehension</b>	<b>25th Apr</b>	<b>Friday</b>	<b>8 to 9 pm</b>		
Ratio Proportion and Variation	25th Apr	Friday	7 to 8 pm			
<b>Weekend Revision</b>		<b>VPAR Revision</b>	<b>26th Apr</b>	<b>Saturday</b>		<b>6 to 8 pm</b>
<b>Advance LOD 2 Lectures - IIT / NIT / Repeaters/ Scholars Batch : Sat and Sun 8 to 9 PM</b>						
Arithmetic Module 10 to 11 PM Verbal Ability 8 to 9 PM (Wed / Fri)	Profit and Loss 1	28th Apr	Monday	10 to 11 pm		9 -11 Questions
	Profit and Loss 2	29th Apr	Tuesday	10 to 11 pm		
	<b>Verbal Wednesday Parajumbles</b>	<b>30th Apr</b>	<b>Wednesday</b>	<b>8 to 9 pm</b>		
	Time Speed Distance 1	30th Apr	Wednesday	10 to 11 pm		
	Time Speed Distance 2	1st May	Thursday	10 to 11 pm		
	<b>Verbal Friday Parasummary</b>	<b>2nd May</b>	<b>Friday</b>	<b>8 to 9 pm</b>		
Time Speed Distance 3	2nd May	Friday	10 to 11 pm			
<b>Weekend Revision</b>		<b>Arithmetic Revision</b>	<b>3rd May</b>	<b>Saturday</b>	<b>6 to 8 pm</b>	
<b>Advance LOD 2 Lectures - IIT / NIT / Repeaters/ Scholars Batch : Sat and Sun 8 to 9 PM</b>						
Arithmetic Module 10 to 11 PM Verbal Ability 8 to 9 PM (Wed / Fri)	Simple and Compound Interest	5th May	Monday	10 to 11 pm	22 Questions	
	Mixtures and Allegations	6th May	Tuesday	10 to 11 pm		
	<b>Verbal Wednesday Vocabulary</b>	<b>7th May</b>	<b>Wednesday</b>	<b>8 to 9 pm</b>		
	Time and Work 1	7th May	Wednesday	10 to 11 pm		
	Time and Work 2	8th May	Thursday	10 to 11 pm		
	<b>Verbal Friday Reading Comprehension</b>	<b>9th May</b>	<b>Friday</b>	<b>8 to 9 pm</b>		
Pipes and Cisterns	9th May	Friday	10 to 11 pm			
<b>Weekend Revision</b>		<b>Arithmetic Revision</b>	<b>10th May</b>	<b>Saturday</b>		<b>6 to 8 pm</b>
<b>Advance LOD 2 Lectures - IIT / NIT / Repeaters/ Scholars Batch : Sat and Sun 8 to 9 PM</b>						
DILR Module 10 to 11 PM Verbal Ability 8 to 9 PM (Wed / Fri)	Logical Reasoning Linear Arrangements	12th May	Monday	10 to 11 pm		7 to 8 Questions
	Logical Reasoning Analytical Puzzles	13th May	Tuesday	10 to 11 pm		
	<b>Verbal Wednesday Parajumbles</b>	<b>14th May</b>	<b>Wednesday</b>	<b>8 to 9 pm</b>		
	Data Interpretation Bar Graphs	14th May	Wednesday	10 to 11 pm		
	Data Interpretation Tables	15th May	Thursday	10 to 11 pm		
	<b>Verbal Friday Parasummary</b>	<b>16th May</b>	<b>Friday</b>	<b>8 to 9 pm</b>		
Data Sufficiency	16th May	Friday	10 to 11 pm			
<b>Weekend Revision</b>		<b>DILR Revision</b>	<b>17th May</b>	<b>Saturday</b>	<b>6 to 8 pm</b>	
<b>Advance LOD 2 Lectures - IIT / NIT / Repeaters/ Scholars Batch : Sat and Sun 8 to 9 PM</b>						
Algebra Module 10 to 11 PM Verbal Ability 8 to 9 PM (Wed / Fri)	Indices - Identities and Expressions	19th May	Monday	10 to 11 pm	7 to 8 Questions	
	Linear and Special Equations	20th May	Tuesday	10 to 11 pm		
	<b>Verbal Wednesday Vocabulary</b>	<b>21st May</b>	<b>Wednesday</b>	<b>8 to 9 pm</b>		
	Quadratic Equations 1	21st May	Wednesday	10 to 11 pm		
	Quadratic Equations 2	22nd May	Thursday	10 to 11 pm		
	<b>Verbal Friday Reading Comprehension</b>	<b>23rd May</b>	<b>Friday</b>	<b>8 to 9 pm</b>		
Inequalities	23rd May	Friday	10 to 11 pm			
<b>Weekend Revision</b>		<b>Algebra Part 1 Revision</b>	<b>24th May</b>	<b>Saturday</b>		<b>6 to 8 pm</b>
<b>Advance LOD 2 Lectures - IIT / NIT / Repeaters/ Scholars Batch : Sat and Sun 8 to 9 PM</b>						
Algebra Module 10 to 11 PM Verbal Ability 8 to 9 PM (Wed / Fri)	Graphs	26th May	Monday	10 to 11 pm		7 to 8 Questions
	Maxima Minima	27th May	Tuesday	10 to 11 pm		
	<b>Verbal Wednesday Parajumbles</b>	<b>28th May</b>	<b>Wednesday</b>	<b>8 to 9 pm</b>		
	Logarithms	28th May	Wednesday	10 to 11 pm		
	Functions 1	29th May	Thursday	10 to 11 pm		
	<b>Verbal Friday Parasummary</b>	<b>30th May</b>	<b>Friday</b>	<b>8 to 9 pm</b>		
Functions 2	30th May	Friday	10 to 11 pm			
<b>Weekend Revision</b>		<b>Algebra Part 2 Revision</b>	<b>31st May</b>	<b>Saturday</b>	<b>6 to 8 pm</b>	
<b>Advance LOD 2 Lectures - IIT / NIT / Repeaters/ Scholars Batch : Sat and Sun 8 to 9 PM</b>						
Geometry Module 10 to 11 PM	Geometry Triangles	2nd June	Monday	10 to 11 pm	7 to 8 Questions	
	Geometry Circles	3rd June	Tuesday	10 to 11 pm		
	<b>Verbal Wednesday Vocabulary</b>	<b>4th June</b>	<b>Wednesday</b>	<b>8 to 9 pm</b>		
	Geometry Quadrilaterals	4th June	Wednesday	10 to 11 pm		

Verbal Ability 8 to 9 PM (Wed / Fri)	Geometry Polygons	5th June	Thursday	10 to 11 pm	2-3 Questions
	Verbal Friday Reading Comprehension	6th June	Friday	8 to 9 pm	
	Mensuration	6th June	Friday	10 to 11 pm	
Weekend Revision		Geometry Revision	7th June	Saturday	6 to 8 pm
Advance LOD 2 Lectures - IIT / NIT / Repeaters/ Scholars Batch : Sat and Sun 8 to 9 PM					
DILR Module 10 to 11 PM Verbal Ability 8 to 9 PM (Wed / Fri)	Logical Reasoning Circular Arrangements	9th June	Monday	10 to 11 pm	22 Questions
	Logical Reasoning Analytical Puzzles	10th June	Tuesday	10 to 11 pm	
	Verbal Wednesday Parajumbles + OOC	11th June	Wednesday	8 to 9 pm	
	Data Interpretation Pie Charts	11th June	Wednesday	10 to 11 pm	
	Data Interpretation Mixed Charts	12th June	Thursday	10 to 11 pm	
Verbal Friday Parasummary + PC	13th June	Friday	8 to 9 pm		
Data Sufficiency	13th June	Friday	10 to 11 pm		
Weekend Revision		DILR Revision	14th June	Saturday	6 to 8 pm
Advance LOD 2 Lectures - IIT / NIT / Repeaters/ Scholars Batch : Sat and Sun 8 to 9 PM					
Numbers Module 10 to 11 PM Verbal Ability 8 to 9 PM (Wed / Fri)	Numbers : Basics	16th June	Monday	10 to 11 pm	2 to 3 Questions
	Numbers : HCF and LCM	17th June	Tuesday	10 to 11 pm	
	Verbal Wednesday Vocabulary	18th June	Wednesday	8 to 9 pm	
	Numbers : Factorization	18th June	Wednesday	10 to 11 pm	
	Numbers : Remainder Theorem	19th June	Thursday	10 to 11 pm	
Verbal Friday Reading Comprehension	20th June	Friday	8 to 9 pm		
Numbers : Baes Theorem	20th June	Friday	10 to 11 pm		
Weekend Revision		Numbers Revision	21st June	Saturday	6 to 8 pm
Advance LOD 2 Lectures - IIT / NIT / Repeaters/ Scholars Batch : Sat and Sun 8 to 9 PM					
Modern Maths Module 10 to 11 PM Verbal Ability 8 to 9 PM (Wed / Fri)	Permutation and Combination	23rd June	Monday	10 to 11 pm	2 to 3 Questions
	Permutation and Combination	24th June	Tuesday	10 to 11 pm	
	Verbal Wednesday Parajumbles	25th June	Wednesday	8 to 9 pm	
	Progressions	25th June	Wednesday	10 to 11 pm	
	Probability	26th June	Thursday	10 to 11 pm	
Verbal Friday Parasummary	27th June	Friday	8 to 9 pm		
Probability	27th June	Friday	10 to 11 pm		
Weekend Revision		Modern Maths Revision	28th June	Saturday	6 to 8 pm
Advance LOD 2 Lectures - IIT / NIT / Repeaters/ Scholars Batch : Sat and Sun 8 to 9 PM					
Special Topics Module 10 to 11 PM Verbal Ability 8 to 9 PM (Wed / Fri)	Coordinate Geometry 1	30th June	Monday	10 to 11 pm	2 to 3 Questions
	Escalators Problems	1st July	Tuesday	10 to 11 pm	
	Verbal Wednesday Vocabulary	2nd July	Wednesday	8 to 9 pm	
	Set Theory and Venn Diagram 1	2nd July	Wednesday	10 to 11 pm	
	Set Theory and Venn Diagram 2	3rd July	Thursday	10 to 11 pm	
Verbal Friday Reading Comprehension	4th July	Friday	8 to 9 pm		
Trigonometry, Heights and Distance	4th July	Friday	10 to 11 pm		
Weekend Revision		Special Topics Revision	5th July	Saturday	6 to 8 pm
Advance LOD 2 Lectures - IIT / NIT / Repeaters/ Scholars Batch : Sat and Sun 8 to 9 PM					
DILR Module 10 to 11 pm Verbal Ability 8 to 9 PM (Wed / Fri)	Logical Reasoning Scheduling Problems	7th July	Monday	10 to 11 pm	22 Questions
	Logical Reasoning Games and Tournaments	8th July	Tuesday	10 to 11 pm	
	Verbal Wednesday Vocabulary	9th July	Wednesday	8 to 9 pm	
	Logical Reasoning Games and Tournaments	9th July	Wednesday	10 to 11 pm	
	DILR Routes and Maps	10th July	Thursday	10 to 11 pm	
Verbal Friday Reading Comprehension	11th July	Friday	8 to 9 pm		
Matrices	11th July	Friday	10 to 11 pm		
Weekend Revision		DILR Revision	12th July	Saturday	6 to 8 pm
Advance LOD 2 Lectures - IIT / NIT / Repeaters/ Scholars Batch : Sat and Sun 8 to 9 PM					



**Sumit Sir**

MBA SPIJMR  
Exec Mgmt Harvard  
Business School  
YEP : IIM Ahmedabad



**Sahil Sir**

NIT | ISB Hyderabad  
Quants and DILR Faculty  
CAT QA 99.9%iler



**Prantik Sir**

MBA IIM Lucknow  
Quants and DILR Faculty  
Bain & Co



**Megha**

MBA SCMHDR  
JP Morgan  
Goldman Sachs



**Biswadip Sir**

MBA NMIMS  
NMAT 220 | CMAT AIR 8  
(QA 100%iler)



**Preet Sir**

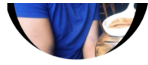
MBA  
Reliance Jio





**Anisha**

MBA NMIMS  
Exec Mgmt Harvard  
Business School  
Ex - Marico | Ex -Henkel



**Manoj Sir**

MBA IIM Mumbai  
Quants and DILR Faculty  
Amazon India



**Krishna Sir**

MBA NITIE  
Quants and DILR Faculty  
CAT 98.6%iler



**Simran**

MBA FMS  
Quants Faculty  
American Express



**Tushar**

MBA IIM Calcutta  
CAT 99.7%iler  
Goldman Sachs



**Monika**

CAT 99.91%ile  
Quants and DILR Faculty  
Doubt Solving Mentor

### Important Notes

<b>What Is the 60 Day's Challenge ?</b>	60 Days, ie 12 Weeks - we will finish all topics once LOD 1 , after that we move to repeating 60 Days Challenge with increasing difficulty level of Questions to LOD 1.5; LOD 2 3 Things One Must Do Daily in the 60 Day's Challenge <b>Step 1: Attend Live Class</b> <b>Step 2: Same Topic Watch LOD 1 Concept Builder Videos</b> <b>Step 3: Solve CATKing Bible LOD 1 eBooks</b>
<b>How to Take Mocks ?</b>	<b>Go to Learn ----&gt; CAT 2025--&gt; Real CAT (RC) Mock Proctored / Take Home - Non Proctored</b>
<b>Unable to Understand the LOD 1 Class</b>	Attend the Slow Learners Batch (SLB) Mon to Fri 6 to 7 pm
<b>Have Doubts ?</b>	Post them on the Discussion Forum ----> Go to Live Classes Schedule --Attend Mon to Fri 6 to 7 pm Doubt Solving Live Classes
<b>How to Use the Course</b>	Login to your dashboard - <a href="https://learn.catking.in">learn.catking.in</a>   Check out the <a href="#">Dashboard Overview Video</a> Attend the <a href="#">Induction</a> Mon to Fri 6 pm with Anisha Ma'am to understand the preparation plan For any doubts post them on Discussion Forum on your Dashboard
<b>Note For Intensive Students Only (July 2025 Onwards)</b>	
<b>Every Sat 9 pm NMAT/SNAP Sat</b>	Saturday and Sunday 9 to 10 pm Non CAT Strategy Masterclasses with NMAT, SNAP , CMAT, CET , XAT Toppers
<b>Every Sun 9 pm CMAT/CET or XAT or MICAT Sundays</b>	Refer the Actual Exam Question Videos, Solve the Non CAT Bible Books and Maximiser Books Refer to the GK Zone to gear up for the Current affairs - Monthly eBooks and Static GK for Exams like CMAT, MICAT, XAT
<b>For more details Contact 8999-11-8999 or Visit <a href="https://courses.catking.in">courses.catking.in</a></b>	